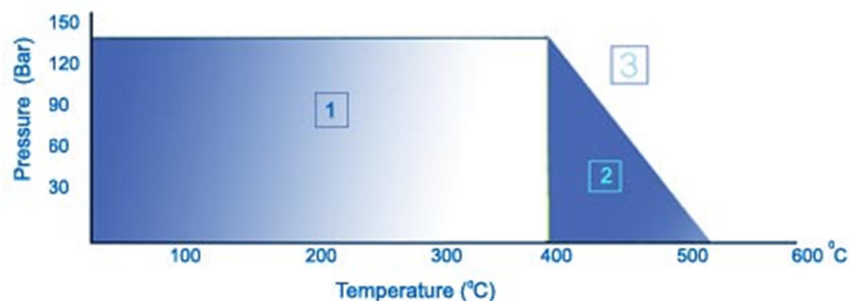


CJ - 27Oil

Asbestos Gasket Jointing Sheet Without Wire

Pres. Max = 140 Kg/sq. cm.
Temp. Max = 550 °C

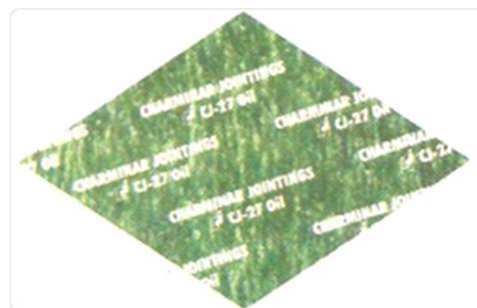


Material Composition:

Made from Chrysotile Asbestos Fiber with Synthetic Elastomers and Inorganic fillers.

Applications:

Suitable for use with internal combustion engines, compressors, Refrigerators, chemical plants, etc. This grade also provides effective sealing against hot oils, tar oils and chlorinated & aromatic hydrocarbons under high stress conditions.



THICKNESS	:	0.25, 0.5mm, 0.8mm, 1mm, 1.5mm, 2mm, 3mm, 4mm, 5mm, 6mm (OTHER THICKNESS ON REQUEST)
SURFACE FINISH	:	Green/Green (OTHER COLORS ON REQUEST)
DIMESNSION OF SHEETS	:	1500MM X3100MM, 1500MM X1500MM, 1500MM X 1000MM, 1500MM X 2000MM, 1270MM X1270MM, 1270MM X 3810MM, 3000MM X 3000MM
OPERATING CONDITION	:	Maximum pressure : 140 Kg/cm2 Maximum Temperature: 550°C
SPECIFICATION COMPLIANCE	:	IS: 2712 / 1998 GRADE O / 1, W / 1

The following Information Applies to material Thickness 1.5mm.

S.NO.	Typical Properties	Test Method	Unit	Specified Value
1	Density	IS:2712/1998	g /cm3	1.70 - 2.20
2	Tensile Strength	IS:2712/1998	Mpa	>24.0
3	Compressibility	IS:2712/1998	%	6 -14
4	Recovery	IS:2712/1998	%	>40
5	Ignition Loss	IS:2712/1998	%	<28
6	Stress Resistance	IS:6210/1979	Mpa	>23
7	FLUID ABSORPTION			
	IN ASTM OIL NO.3			
	(a) Thickness Increase	IS:2712/1998	%	<25
	(b) Mass Increase	IS:2712/1998	%	<20
	IN FUEL B			
	(a)Thickness Increase	IS:2712/1998	%	<20
	(b) Mass -Increase	IS:2712/1998	%	<20

	IN WATER			
	(a) Mass - Increase	IS:2712/1998	%	<10

NOTE

All information and recommendations given in this brochure are correct to the best of our knowledge. However, in view of the wide variety of possible installation and operating conditions one cannot draw the final conclusion in all application cases regarding the behaviour in a gasket joint. Therefore, information can only serve as a guideline.