

RD-40, 41, 41F Type Pressure Reducing Valve (for Steam)

for Food processing Medical Devices, Laundry Machines and other Steam Equipments/Devices

Compact, light-duty, direct operated pressure reducing valve, ideal for integration into a variety of equipments for precise steam control.

Most suitable for food processing equipments, kitchen equipments, medical devices, laundry machines, air-conditioning (humidifying) equipments, and other equipments /devices that are required to be rust free.

For high-grade steam lines, a valve with stainless steel body is most suitable.



RD-40, 41 Type



RD-41F Type

■ FEATURES

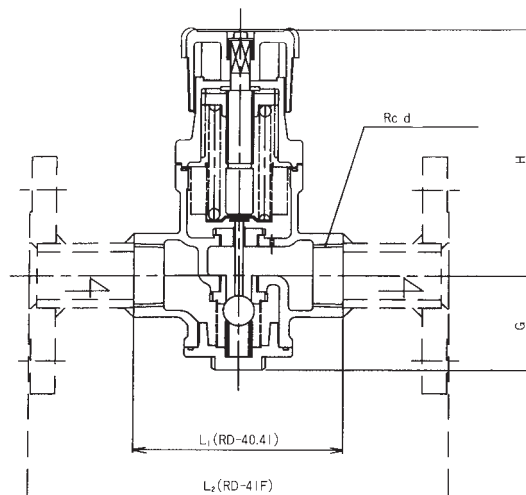
- Ensure large flow (heat) necessary for starting up machines.
- The stainless steel/bronze body and stainless steel disc & seat ensure supply of clean steam.
- Precise adjustment of secondary pressure with manual handle with automatic lock mechanism.
- Stainless steel bellows and embedded strainer (80 mesh) allow high durability.

■ SPECIFICATIONS

Body material	Cast bronze, Screwed	Stainless steel, Screwed	Stainless steel, Flanged
Model name	RD-40 L/M/H	RD-41 L/M/H	RD-41F L/M/H
Code name	RD40-J □	RD41-D □	RD41F-D □
※L, M or H for adjustable secondary pressure is required in □.			
Applicable fluid	Steam		
Applicable primary pressure	Max. 1.0MPa*		
Adjustable secondary pressure (Color of name plate and spring)	L: 0.02~0.25MPa (Green) M: 0.2~0.4MPa (Blue) H: 0.35~0.8MPa (Red)		
Maximum reducing rate	20:1		
Minimum pressure differential across the disc	0.02MPa		
Lock up pressure	Max. 0.02MPa		
Offset pressure at rated flow	Within set pressure 0.5 (Adjustable secondary pressure: Max. 0.13MPa) Within 0.07MPa (Adjustable secondary pressure: 0.13MPa~0.4MPa) Within 0.12MPa (Adjustable secondary pressure: 0.4MPa~0.8MPa)		
Leakage allowance	Less than 0.05% of rated flow		
Applicable temperature	Max. 220 °C		
End connection	Screwed JIS Rc		Flanged JIS 10KRF
Materials	Body	Cast bronze	Stainless steel
	Trim	Disc & seat (Stainless steel), Bellows (Stainless steel)	
Valve body pressure test		Hydraulic 1.5MPa	

*Applicable primary pressure 1.6MPa is also available upon your request.

■ CONSTRUCTION



The structure of the flange-type of welded part may be different from what is shown in the drawing.

■ DIMENSIONS

(mm)

Size	d	L ₁	L ₂	G	H
15(1/2")	1/2"	83	186	55	128
20(3/4")	3/4"	96	190	55	128
25(1")	1"	108	190	55	128

■ MASS

(kg)

Size	RD-40 Type	RD-41 Type	RD-41F Type
15(1/2")	1.7	2	3.8
20(3/4")	1.7	2	4
25(1")	1.9	2.4	5.5